

SILPHON®FIBER UL / Dens 10

SILPHON®FIBER UL is a thermally insulation material and a sound absorber made of 100% polyester fiber thermobonded (Polyethylene terephthalate – Co-Polymer Polyethylene terephthalate) specifically designed for use in the railway sector.

The characteristic of thermobonding is the complete recyclability of the product and of its clippings; for this reason it can be considered to all effects 100% recyclable.

Not fraying and does not disperse into the environment powders, particles or fibrils potentially harmful to man: the average diameter of its fibers is 19,4 micrometers.

SILPHON®FIBER UL is designed for the 'insulation of high speed railway rolling stock.

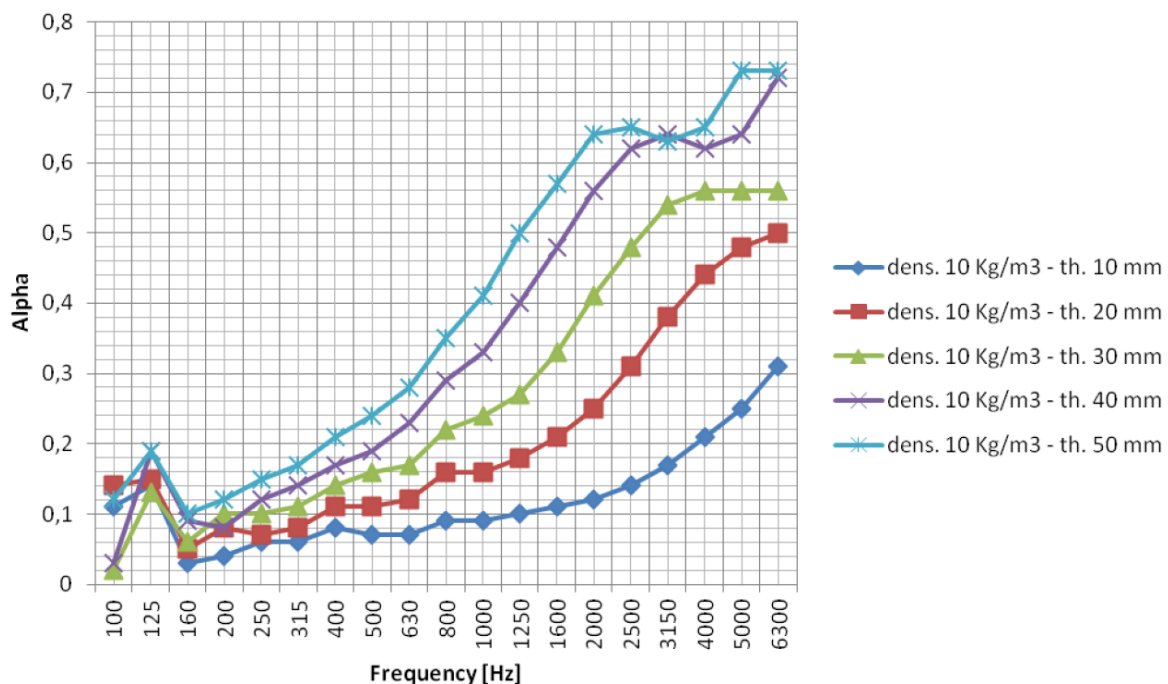
The thermal conductivity of **SILPHON®FIBER UL** at the density of 10 kg/m³ is "λ" = 0,0469 [W/m°K].

The sound absorption coefficient of **SILPHON®FIBER UL** measured with Kundt's tube in density 10 kg/m³ and in reverberant room of **SILPHON®FIBER UL** density 20 kg/m³ and thickness 50 mm are represented on graphs below.

SILPHON®FIBER UL on density 10 kg/m³ is also expected to be HL3 for thicknesses from 10 mm up to 100 mm according to EN 45545-2.

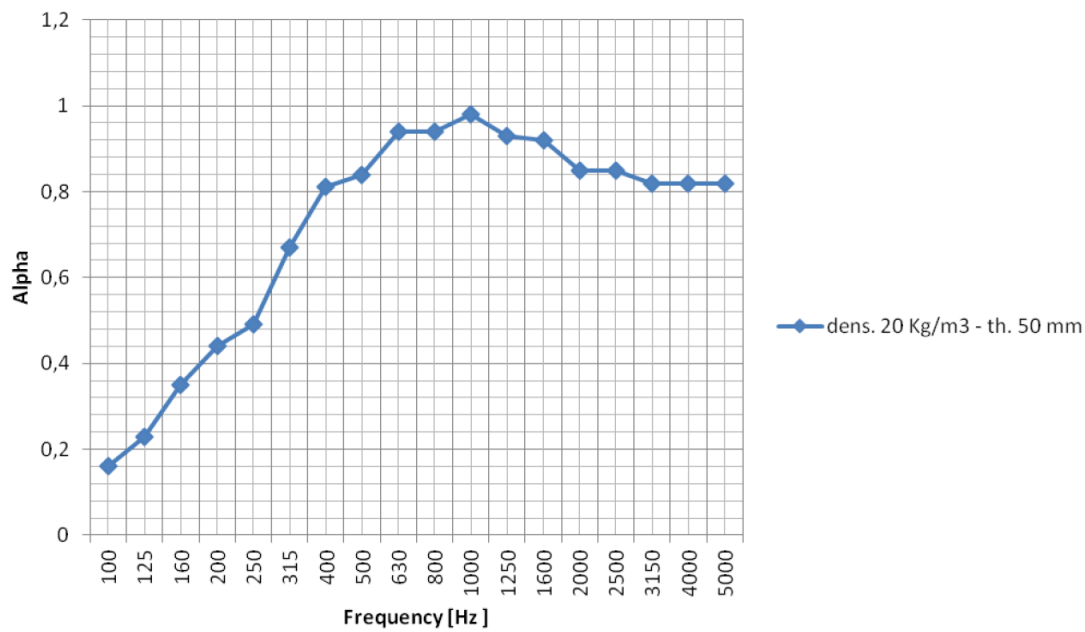
Density	Material in rolls	Material in sheets
10 Kg/m ³	Thickness from 15 to 40 mm +/- 5 mm Width of Rolls: 1000 mm +/- 5 mm	Thickness: from 25 to 100 mm +/- 5 mm Standard panel size: 2800 x 1200 mm

Acoustic absorption Kundt's tube SILPHON®FIBER UL



Die Angaben erfolgen nach bestem Wissen und technischen Kenntnissen. Vorbehalten bleiben Änderungen.

Expected acoustic absorption SILPHON®FIBER UL



Die Angaben erfolgen nach bestem Wissen und technischen Kenntnissen. Vorbehalten bleiben Änderungen.